

Working with perpetrators*

(*men who are worried about their behaviour in the family)

Mika Vääränkivi

Expert in domestic violence intervention work

Lyömätön Linja Espoossa ry

LYÖMÄTÖN

LINJA

ESPOOSSA

Perpetrator work in Finland

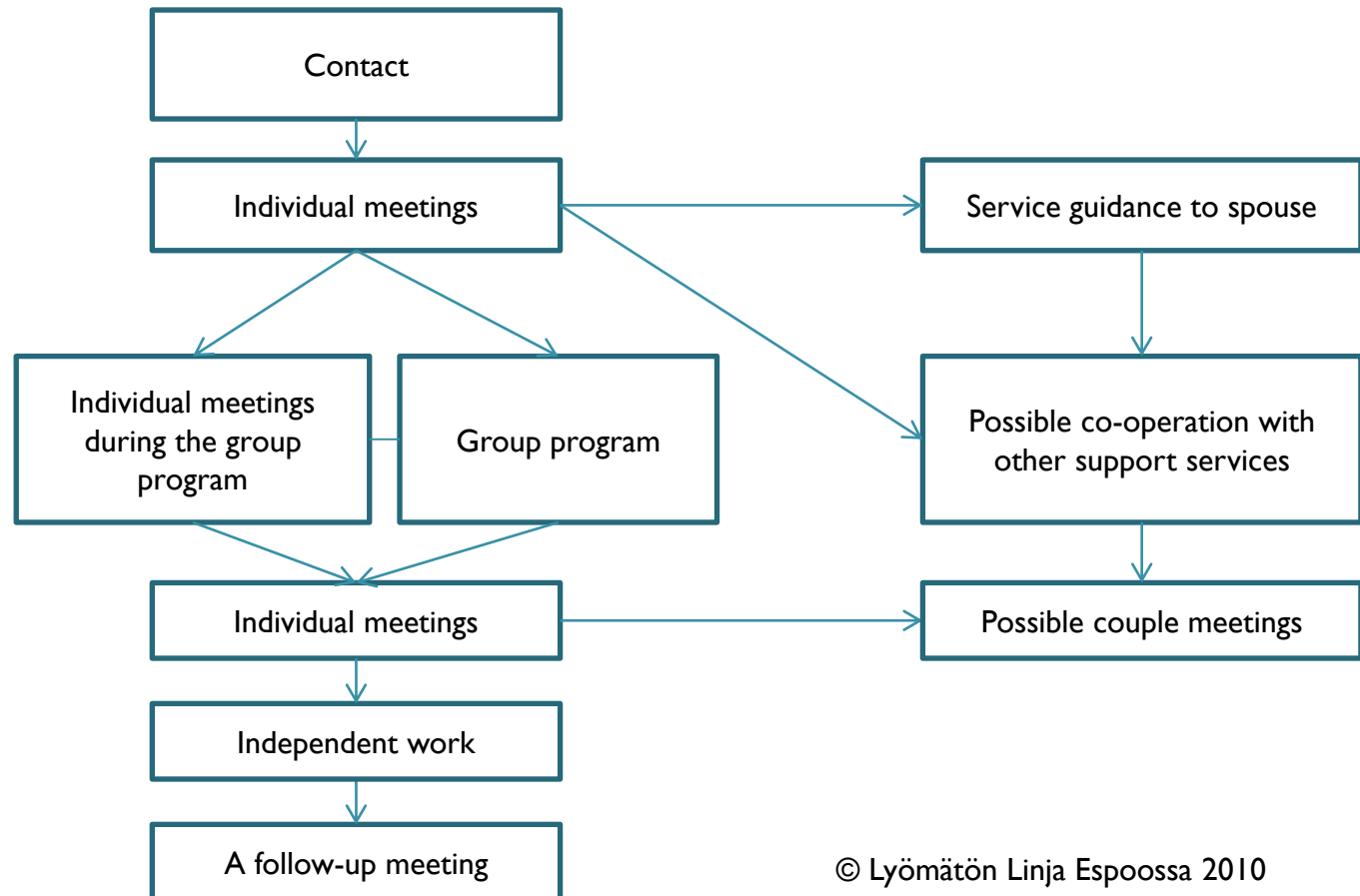
- Coordinated mainly by The Federation of Mother and Child Home and Shelter in Finland
- Jussi-Work in 9 cities and other forms of perpetrator work in 8 cities
- Perpetrator work is done in close co-operation with victim work

Our association: Lyömätön Linja Espoossa ry (NGO)

- Member of The Federation of Mother and Child Home and Shelter in Finland
- Funded mainly by the City of Espoo and Finland's Slot Machine Association (RAY)
- Started in 1979 as a shelter for women
- Perpetrator work along with shelter work from 1993
- Miehen Linja, a service for immigrant men from 2005

Our work model

ALTERNATIVE TO VIOLENCE - PROGRAM



Working stages

- **Crisis stage**

("I have done something terrible, I can't sleep, I am a terrible person")

- **Violence identification stage**

("Calm down, let's see what have you actually done to your loved ones. Take responsibility of your actions")

- **Stage of development of non-violent abilities**

("Let's find out how you can act in a more responsible way and face the difficult situations within the family)

- **Peer- to-peer stage**


("Welcome to our group, tell your story to the other group members, share your non-violent abilities between each other")

- **The ending stage**

("Let's set up a plan on how you can act in a better way within the family in future. Please come to a follow-up meeting in about 6 months")

Our working principles

- Women and children first: the main purpose working with men is to ensure the safety of the whole family
- Working in network environment: registered practices in client co-operation (for example the network co-operation model with the local police)
- Based on client's motivation and will to change his own behaviour



”In the past I have released my bad feelings by touching my wife in a wrong way. Now I can talk. I’m more mature and I’ve grown. Thanks to the Lyömätön Linja, I have gathered my self esteem and self confidence. Admitting the fact that I’ve hurt my loved ones has been painful but vital. Life carries on.”

Our client’s quote from a book ”Mikä minuun meni?” (“What went into me?”) by Jari Hautamäki, the Executive Director in Lyömätön Linja Espoossa